



VALVE SOLUTIONS FOR THE INDUSTRY



ABOUT OUR COMPANY

AVK PHILIPPINES INC.



In the early 1970's, AVK company was started with the aim of becoming a global leader in the water supply system. Today, AVK has become one of the leaders in the industry supplying quality valves, hydrants and fittings. AVK valves and fittings have been installed in potable water supply and distribution systems, water and wastewater treatment, fire protection and gas distribution for the heating and electricity systems. At AVK, we are committed to develop products with the highest quality standards at the most affordable cost for our clients.

AVK Philippines Inc. is part of the global AVK group, a privately owned Danish company employing more than 4,500 people worldwide. AVK Philippines was established in 1999 and become a byword in the water industry and has been known to supplying quality products such as gate valves, butterfly valves, hydrants, and fittings at the most affordable costs. Prestigious projects in Metro Manila and part of Visayas and Mindanao Provincial local water districts who have used AVK Products, are proof that AVK is widely accepted as quality products for their water supply projects.

As AVK Philippines became one of the best-known suppliers of valves to water districts, it has also began introducing the HVAC and Industrial Segment in the market. AVK Philippines started to supply bulk orders of general valves, motorized valves and hydraulic valves used in buildings and district cooling system with its brand named ICV - one of the dedicated member of AVK Group. AVK Philippines also take part on big projects of building data centers inside and outside of Metro Manila. As years goes by, AVK Philippines have gain its pace within HVAC Industry and continuously developed industrial valves for the industry solutions.

WHAT TO EXPECT FROM AVK

Doing business with AVK is getting a share of our know-how, expertise and dedication. As a global leader, it is our obligation to keep pushing the boundaries of what the market can expect.

- **Expect** lasting innovation
- **Expect** quality in every step
- **Expect** global leadership and local commitment
- **Expect** prompt response
- **Expect** solutions, not just products
- **Expect** it to be effective and easy
- **Expect** a long-term partnership
- **Expect** total savings

OUR VISION

- the leader in our industry
- our customers preferred supplier where quality, innovation, reliability and customer service are vital importance
- a reliable and trustworthy business partner by acting responsibly while balancing financial, environmental and social issues.

OUR MISSION

AVK is a global group of companies operating in three main segments: Water, Industry and Advanced Manufacturing. As a leader in our industry, we are committed to bringing the highest quality and safest product on time to our customers using the latest technology while acting responsibly, respecting the environment and providing meaningful jobs for our employees.



VALVES SOLUTIONS FOR THE INDUSTRY



ORBINOX

ORBINOX is the leading European knife gate valve manufacturer

More than 50 years' experience designing, manufacturing, and marketing knife gate valves, penstocks, dampers, and valves for hydraulic work. With six manufacturing sites and presence in +70 countries we are close to our customers and can offer expert technical advice.

www.orbinox.com



Wouter Witzel

Wouter Witzel is a leading manufacturer of vulcanised butterfly valves

A Dutch manufacturer of vulcanised bonded concentric butterfly valves and actuators. With 65 years of experience, Wouter Witzel is able to meet the most stringent demands in the market and offer customised solutions for almost every industrial application.

www.wouterwitzel.nl



InterApp

InterApp design, produce and sell high-quality valve solutions worldwide

With more than 50 years of experience, our valves are used in the most demanding applications and industries, helping you transport and regulate liquids, gases and solids in the safest way possible. We develop and manufacture our butterfly valves in Europe.

www.interapp.net



OMV INDOIL

OMV-INDOIL design and produce high-performance ball and butterfly valves

With more than 30 years of experience in producing high-performance ball and butterfly valves in various materials, OMV-INDOIL deliver specialised solutions according to customer's requests within the oil, petrochemical, gas, processing industries and energy sector.

www.omv-indoil.hr



TEC artec

Tec artec offers high-pressure control valves and desuperheaters

Tec artec has accumulated knowledge and experience in applications for the gas and power plant industry with high pressures, extreme temperatures and aggressive media, and rely on more than 25 years of experience in developing industrial auxiliary equipment.

www.tec-artec.de



Flonidan

Flonidan is a world market leader in smart gas meters

Flonidan DC A/S has more than 25 years of experience in design and manufacture of innovative metering solutions with integrated data communication for the gas, water, and district heating markets - as well as customised turnkey gas stations for the gas market.

www.flonidan.dk

POWER GENERATION



Rubberlined butterfly valves

Complete range of butterfly valves in wafer, semi-lug, tapped-lug, u-section, single flange and double flange.

Specifics:

Size: DN50–2200
Pressure: Up to 25 Bar
Temperature: Up to +200°C



Flanged double eccentric butterfly valves

Body and disc in ductile iron. Shaft, and pins in Stainless Steel. Fusion bonded epoxy coating acc to GSK.

Specifics:

Size: DN200 – DN2200
Pressure: 10 + 16 + 25 Bar
Temperature: 0 to +70°C



Centric butterfly valves

Ductile iron or carbon steel body. Shaft in stainless steel. Disc in ductile iron, or in stainless steel. Loose liner in EPDM.

Specifics:

Wafer/lug type
Size: DN25 – DN1600
Pressure: Up to 16 Bar / Up to 20 Bar
Temperature: -50 to +140°C / -40 to +200°C



Full bore ball valves

Body and ball in stainless steel. Seats in PTFE. Manually pneumatically or electrically operated.

Specifics:

Size: DN15 – DN100
Pressure: Up to 63 Bar
Temperature: Up to +650°C



Fixed Ball Valve

Specifics:

Sizes: DN15- DN1000
Types:
-Floating ball, trunnion mounted,
-2-way, 3-way -Flanged, wafer, threaded, SW, BW
Standards: EN, ANSI, GOST, API
Pressure: PN6 - PN250, Class150 – 150



High Pressure ball valves

Soft and metal sated On/off and control function Custom made

Specifics:

Size: DN25 – DN1000
Pressure: 16 Bar to 420 Bar
Temperature: Up to +550°C



Globe Valve

Specifics:

Sizes: DN10- DN400
Types: Straight, angle, Y-type, bellow sealed
Pressure: PN6 - PN320, Class 150 - 2500
Material: Carbon and stainless steel, alloyed steel, bronze, ductile iron, duplex, Casted and/or forged



Varitac Ball valve

Specifics:

Sizes: DN25 - DN1400
Pressure level up to PN420.
Used for shut-off, control and safety functions.



Butterfly valve

Specifics:

Sizes: DN40 - DN600
Types: -Double & triple eccentric, high performance HP butterfly valve, - Flanged, lug, wafer
Materials: Carbon and stainless steel, bronze, ductile iron, duplex, superduplex



CX Model

The CX model knife gate valve is a uni-directional full-flange knife gate valve specially designed to isolate pulverized coal burner lines in coal fired power plants. The design of these valves follows the

NFPA 85 requirements.

Specifics:

Sizes: DN200 - DN900 Design
Pressure: Exceeds 3.5 bar (50PSI) following NFPA 85



EX (Series 10) Model

Cast iron or stainless steel mono-block body, stainless steel gate, different seat materials (metal, EPDM,...) and various actuation solutions

Specifics:

Size: Up to DN1200
Pressure: 10 Bar (DN250) / 6 Bar (DN450) / 5 Bar (DN600) / 2 Bar (DN1200)



BX Model

The BX model knife gate is a bi-directional wafer valve specifically designed for the isolation of pulverized coal burner lines on coal fired boilers during maintenance.

Specifics:

Size: DN700 - DN1000 (Smaller and larger diameters on request).
Pressure: DN 700 to DN 1000: 3 bar

DAMS & RESERVOIRS



Eccentric Butterfly Valve

Specifics:

Variant: 756/102-00
Connection: Flanged
Material: Ductile Iron
Size: DN700- DN1200



Hydraulic Butterfly Valve

Specifics:

Variant: 756/A102-002
Connection: Flanged
Material: Ductile Iron
Size: DN150-1600
Closing direction: CTC



Rubberlined Butterfly Valve

Specifics:

Variant: EVFL
Connection: Flanged
Material: Ductile Iron
Size: DN50-1500



Recoil Check Valve

Specifics:

Variant: 641/13-001
Connection: Flanged
Material: Ductile Iron
DN: DN100-300mm



BU Bonneted Gate

The body of the gate is designed as a self-resistant recipient which resistant to the design pressure without the assistance of the concrete.

Specifics:

Available with hydraulic, electric or manual actuator.



Needle Valve

Specifics:

Variant: 872/00-001
Connection: Flanged
Material: Ductile Iron
DN: DN80- DN1600



OS & Y Metal Seated Gate Valve

Specifics:

Variant: 54/3334-07
Connection: Flanged
Material: Ductile Iron
Size: DN350-DN700
Closing direction: CTC/CTO



Metal Seated Gate Valve

Specifics:

Variant: 54/31-A01 Flanged
Material: Ductile Iron
Size: DN700-DN1200
Closing direction: CTC/CTO



MB Model

Fabricated double eccentric butterfly valve for emergency, turbine protection and maintenance closing of pipes and penstocks in dams and reservoirs.



Free discharge Valve

Cast body or Carbon steel/ Stainless steel fabricated body, elastomer seat and hydraulic or electric actuator.

Specifics:

Size: Up to DN3000
Pressure: Up to 20 bar.



Constant Flow Control Valve

Series 859 diaphragm actuated flow control valves (CFV) automatically regulates the flow not to exceed the pilot setting, regardless of changes in inlet or outlet pressure.

Specifics:

Size: DN65-DN600
Variant: 879/002X-001
Connection: Flanged
Material: Ductile Iron



Air Valve

Triple function ventilation air valves with aerokinetic performance. Large discharge capacities and drop tight shut off for full pressure range.

Specifics:

Size: DN25 – 250

Pressure: PN10, 16 & 25 bar



XC (Ser.14) Model

The XC model knife gate is a wafer valve designed for industrial bulk handling service applications. The special design of the body allows for easy passage of the fluid and makes it ideal for use as silo outlet valve.

Specifics:

Size: DN 50 to DN 600 (larger diameters on request)



Wedge Gate Valve

Metal seated gate valve for isolation. Double Flanged (PN25 available in certain sizes).

Specifics:

Size: DN50 – 2400

Pressure: 10, 16 & 25 bar



Dismantling Joints

Dismantling joints provide easy installation and disassembly of flanged and fittings, or flanged equipment such as valves, meters and pumps.

Specifics:

Size: Up to DN3500

Pressure: Up to 25 bar



Flange Adaptors

Dedicated flange adaptors for all ductile iron, cast iron and steel series 1 pipes, suitable for use with water and neutral liquids (sewage) to a maximum temperature of a +70°C.

Specifics:

Size: Up to DN3500

Pressure: Up to 25 bar



Knife Gate Valve

Bonneted valve, carbon or stainless steel fabricated body bonnet and gate, elastomer or bronze seat and hydraulic or electric actuation.

Specifics:

Size: Up to DN3500

Pressure: Up to 25 bar



Stop logs

3 sided sealing. Stainless steel construction for frame, logs in stainless steel or aluminum, with EPDM sealing. Wall or open channel mounting options available.

Specifics:

Size: Up to 4000 x 4000 mm

Pressure: Log height.



Spherical Valve

Cast or fabricated, metallic/soft designs, with movable service seal. Counterweight/hydraulically operated with digital instrumentation systems.

Specifics:

Size DN300 – 2000

Pressure: PN10, 16, 25, 40 & 64 bar



Submerged Discharge Valve

Terminal discharge valve providing submerged energy dissipation and flow control. Type – End of line single flanged.

Specifics:

Size: DN200 – 1800

Pressure: 10 & 16 bar



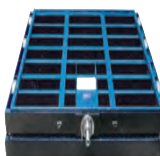
Penstock / Sluice Gate

Three and four side sealing. Stainless steel full frame and gate, EPDM seals, HMWPE guides and various actuation solutions (manual, pneumatic, electric... etc).

Specifics:

Size: Up to 4000 x 4000 mm

Pressure: 4-side: 1 bar on / 0,6 bar off
3-side: Gate height



Roller Gate

Carbon steel fabricated gate, roller system for guiding purposes, elastomer seals and hydraulic or electric actuation.

Specifics:

Size: Up to 6000 x 8000 mm

Pressure: Up to 10 bar



WS Model

Fabricated construction of body and bonnet, of robust design. Guiding and closure system by means of half-wedges on the body and gate. High levels of seal (both valve seat and to atmosphere).

Specifics:

Size: Up to 2400mm

Pressure: Up to 25 bar, depending on size

WATER TREATMENT PLANTS



Ball valves

2 and 3 way valves in different materials
Stainless steel, special alloys, PTFE lined and PVC.



VKDIV Plastic ball valve

Specifics:

Material PVC-U, PP, PVDF
Size: DN10 – DN100
Pressure: PN16 Temperature: Up to +140°C



IA Motion Pneumatic Actuators

Depending on the specific requirements, InterApp valves can be operated manually or automatically.



Check valves

Metal and rubber seated check valves

Specifics:

Size: DN32 – DN600 Pressure: Up to 16 Bar
Temperature: -10 to +400°C.



Desponia® plus

Centric butterfly valve for desalination applications at higher pressures.

Specifics:

Size: DN25-600
Flange: PN16,
Material: 316 Stainless Steel disc and replaceable liner

Halar coated



Desponia®

Specifics:

Size: DN25-1600

Flange: PN16,

Material: 316 Stainless Steel disc and replaceable liner



Eurovalve Check valve

Specifics:

Flangeless wafer type. EN 1092 PN6 and 16 ASME B16.5 cl. 150MMS SP 44 cl. 150

Face to face: EN558-1/2 Series 16 Seat bonded to the body

Size: DN 50 – 600
Pressure: Up to 16 Bar
Temperature: -40 to +200°C



Centric rubberlined butterfly valves

Full vacuum. High duty. Bonded to the body. Lining: EPDM, NBR and VITON.

Specifics:

Body types: wafer, lug, single, double flanged body types. Available in EN and ANSI CL 150 standard

Size: DN50–DN2200 Pressure: Up to 25 Bar Temperature: 40 to +200



Rubberlined EVS

Complete range of butterfly valves in wafer, semi-lug, tapped-lug, u-section, single flange and double flange.

Specifics:

Size: DN50-2200 Flange: PN16 Material: 316 Stainless steel disc, and replaceable liner



Fabricated tilting check valve

Carbon or stainless steel fabricated body and disc, metal or elastomer seat and optional hydraulic damper and counterweight.

Specifics:

Size: Up to DN2000

Pressure: Up to 16 Bar

Temperature: Ambient



LYSITHEA - Double eccentric butterfly valve

Double eccentric butterfly valve for all kind of water and other non aggressive fluids

Specifics:

Size: DN 400-2200 (3000)

Pressure: 20 Bar (class 150)
50 Bar (class 300)



PTFE Lined Ball Valves

Pneumatically operated.

Specifics:

Size: DN15-DN100.

Material: Fullbore PFA lined BV with flanged ends and 3-piece body for corrosive applications.



Bianca

Specifics:

Size: DN32-900

Material: Ductile Iron body 2 piece body Stainless PFA coated disc, 1 piece disc and shaft PTFE liner.

Also available in: Lug, U-body type



Bianca PTFE- Lined Butterfly valve

Specifics:

Wafer, Lug, U-Section

Size: DN 32-900 Up to 16 bar

Flange connection: PN10, PN16, ANSI cl. 150, AS 2129



Food Grade Butterfly Valve

FDA approved liners and polished discs for the food industry. Dry media, powders, vibration and manual or automated.



Liners

(for food and beverages) Desponia® and Desponia® plus range

Black, white, blue and transparent liners

All food and beverage liners comply with FDA and/or EU N° 1935/2004 regulations.



Rubberlined EVFS

FDA approved liner EPDM-per EC1935 compliant, vulcanized bonded to the body. Vacuum proof and lifetime low operating torque

Specifics:

Double flanged type for food and beverages

Size: DN50-2000

PN10 or PN16



Dynaxe

Double eccentric design. Available in many high-quality materials. Available as wafer, lugged and double flanged type.

Specifics:

Size: DN50 – DN900

Pressure: 20 Bar (class 150) 50 Bar (class 300)

Temperature: Up to +425°C



BR Model

The design of the body and seat assures non-clogging shut off on suspended solids in industries.

Specifics:

Size: DN 50-DN 600mm (larger diameters on request)

Working Pressure: 10 bar, 6 bar, 5 bar, 4 bar



ET (Ser.20) Model

Uni-directional lug type valve designed accdg to MSS-SP-81 and TAPPI-TIS 405 for industrial services application.

Specifics:

Size: DN 50-600 (larger diameters on request)

Flanged Connection: EN1092 PN10, NSI B16.5 (class 150)



HK Model

The HK model knife gate is a uni-directional wafer valve designed for general industrial service applications.

Specifics:

Size: DN 150 to DN 300

Flanged Connection: EN 1092 PN 10



XC (Ser.14) Model

Uni-directional hopper shape wafer style knife gate valve for discharge, material and bulk handling applications

Specifics:

Connection: Flanged EN1092 PN10 NSI B16.5 (Class 150)

Size: DN50-600 (large diameter on request)

MINING & SLURRY

WG (Ser.65) Model



Slurry bi-directional heavy duty full flanged wide face to face body knife gate valve with rubber sleeves

Specifics:

Size: DN80 - 900 (large DN on request)

Working Pressure: DN 80mm-400mm:(150psi)

DN 450mm- 600mm:(90 psi or 150psi) DN 750mm: (75 psi or 150psi) DN 900mm: (75 psi or 150psi)

VG (Ser.61) Model



Double-seated design provides bi-directional shut-off.

Specifics:

Size: DN50 - 900 (large DN on request)

Working Pressure:

DN 50 to DN 400 (10 bar)
DN 450 to DN 600 (6 bar or 10 bar) DN 700 to DN 900 (5 bar)

HG (Ser.61) Model



Heavy duty slurry knife gate valve, for applications at high pressure.

Specifics:

Size: DN 80 – 600 (larger sizes upon request)

Working Pressure:

DN50 - DN400 (10 bar) DN450 -DN600 (6 bar/10 bar) DN700 to DN900 (5 bar)

(Ser. L20) Model



Uni directional monoblock Wafer type, ductile iron body 304 stainless steel gate, EPDM seat (pneumatic actuator option available)

BT (Ser.22) Model



The BT model knife gate is a bi-directional lug type valve designed according to MSS-SP-81 and TAPPI TIS 405-8 for industrial service applications.

Specifics:

Size: DN50 to DN900 (larger diameters on request)

Standard Flange

Connection: ASME B16.5 (class 150)

BC (SER.90) Model



The BC model knife gate is a square port low-pressure valve for solid loaded fluids, mainly used in bulk handling and silo outlet applications in industries.

Specifics:

Size: From DN 150 x 150 to DN 600 x 600

Working Pressure: 150 x 150 to 600 x 600: 1 bar

Casted bodies (on request)

(Tailor Made High-Pressure Valves)



Specifics:

Size: DN 15 - DN 300

Pressure: PN 63 - PN 420, Class 600 - 2500

Material: Carbon and stainless steel, alloyed steel, duplex, superduplex

Butterfly Dumper



Available with pneumatic, electric, hydraulic or manual actuator.

Specifics:

Size: Up to DN2500

Tightness level: 95%-100%

Pinch Valve



Heavy duty that employs elastomer sleeves for flow shut-off and control in applications with abrasive and corrosive slurries.

Specifics:

Size: DN25-300 Working Pressure: DN25mm - 150mm (10 bar) DN200mm (8.5 bar) DN250mm (7 bar) DN300mm (6 bar)

GB – Gearbox



Quarter turn gearbox handoperated with cast iron housing Polyurethane coated.

Specifics:

Body cast iron.

DI Model- 3way dumper



The 3 way damper can control, distribute or isolate gas flow.

Available with pneumatic, electric, hydraulic or manual actuator. Applications in cogeneration plants, waste heat recovery systems.

Specifics:

Size: Up to DN 2000



PFA lined Ball Valve

Full bore PFA lined ball valve with flanged ends and 3-piece body, for corrosive applications.

Specifics:

ANSI cl. 150 type with ISO top flange



Bianca Butterfly valve

PTFE lined centric butterfly valve for corrosive fluids and high-purity applications.

Specifics:

Sizes: DN 32-900

Liner materials:

PTFE, PTFE conductive, Ultraflon®, Ultraflon® conductive, Ultralene™



Desponia

Desponia a multi-purpose, modular and state-of-the-art valve with outstanding durability and resistance.

Specifics:

Size: DN 25- DN1600

Liner materials:

EPDM, Nitrile, FPM, Flucast®, CSM, ECO, Silicone, white and blue liners for food applications



EK Model

The EK model knife gate is a uni-directional wafer valve designed for general industrial service applications.

Specifics:

Size: DN 50 to DN 1200 (larger diameters on request).

Flanged Connection: EN1092 PN10 and ASME B16.5 (class 150).



EB (Ser.11) Model

A bi-directional valve designed for general industrial service applications. The design of the body and seat assures non-clogging shutoff on suspended solids in industries

Specifics:

DN50-DN1200 (larger diameter on request)

Flange connection: EN1092 PN10



CW (Ser.50) Model

Special design cast body high pressure Knife Gate Valve for use with heavy hazardous fluids and high working pressures, in the chemical or food industry. As well as environmental sector.

Specifics:

Size: DN80-DN1000

Working Pressure: Up to 64 bar, depending on size



EX (Series 10) Model

Cast iron or stainless steel mono-block body, stainless steel gate, different seat materials (metal, EPDM,...) and various actuation solutions

Specifics:

Size: Up to DN1200

Pressure: 10 Bar (DN250) / 6

Bar (DN450) / 5 Bar

(DN600) / 2 Bar (DN1200)



Electric Actuators (Industrial Service)

Main features of electric actuators are:

-High torque output -Self braking construction -Low noise level -Smooth operation over complete valve stroke. - Most economical way of power actuation for bigger sizes of butterfly valves

Specific technical information on request.



Electric Actuation (Energy Power source)

Main features of electric actuators are:

-High torque output -Self braking construction -Low noise level - Smooth operation over complete valve stroke.

Most economical way of power actuation for bigger sizes of butterfly valves.



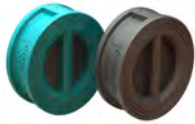
PE Model- Louver dumper

One or multiple louver rectangular section flange mounted louver damper for gas regulation/control and isolation. Applications in cogeneration plants, waste heat recovery systems.

Specifics:

Size: Up to 2500 x 2500

MARINE



Neptunia -Duo Check Valve

For liquids and gases in the industrial range, general services, water treatment.

Specifics:

Sizes: DN50-DN600

Body Material: Metal

Body Type: Dual Plate Check



Ball Valve

Stainless steel ball valve with 3-piece body, full bore, top flange for mounting of actuator



DESPONIA® plus – Butterfly valve

Desponia® plus is built for long-lasting use in highly demanding environments up to 20 bar.

Specifics:

Sizes: DN25-DN600



Rubberlined EVML

Concentric butterfly valve with bonded vulcanised rubber lining

Specifics:

Sizes: DN80 - DN800, NPS 3" - 32"

Maximum Pressure 16 bar (optional 25 bar)



Rubberlined EVBS

Short pattern wafer face-to-face with guiding lugs to fit ISO PN10/16 flange standard. Concentric butterfly valve with bonded vulcanised rubber lining

Specifics:

Sizes: DN 50 - 300, NPS 2" - 12

Maximum Pressure: 16bar

Application: On/off, regulating, control valve



Rubberlined EVFL

Long pattern double flange face-to-face. End-of-line duty by through bolting to pipe flanges. Disc edge protection by no disc-to-pipe-protrusion

Specifics:

Sizes: DN50 – 2000, NPS 2" - 80"

Maximum Pressure: 16bar



ET (Ser.20) Model

Uni-directional lug type valve designed accdg to MSS-SP-81 and TAPPI-TIS 405 for industrial services application.

Specifics:

Size: DN 50-900 (larger diameters on request)
Flanged Connection: EN1092 PN10, NSI B16.5 (class 150)



EW Model

Uni-directional AWWA C520-14 lug type knife gate valve for general industrial applications

Specifics:

Size: DN250 - DN900 (larger diameters on request)



KP Model

KP valve provides isolation of an instrument level transmitter from a storage tank. Installation of this valve allows for transmitter replacement or maintenance without disruption of the process or draining of the vessel.

Specifics:

Sizes: DN80

Standard Flange Connection: PN10 ASME 150

Other flange connection on request



Gearbox-Aluminum body

Quarter turn gearbox handoperated with cast aluminium housing Polyurethane coated



Bernard Controls (Industrial Electric Actuators)

Specifics:

Power supply: AC / DC and three-phase. For On-Off and Modulating applications. Special executions available: Explosion-proof, fail-safe executions, etc.



Check Valves

Specifics:

Sizes: DN15 - DN300

Types:

-Piston, swing, tilting disc, nozzle check, dual disc

-Flanged, wafer, threaded, SW, BW

Standards: EN, ANSI, GOST, API

Pressure: PN 16 - PN 160, Class 150 - 2500



Plug valves

Specifics:

Lubricated, sleeved, 2-way, 3-way

Standards: DIN, EN, ANSI, API

Sizes: DN 25, DN 80, PN 10

Pressure: 1/2" - 12", CLASS 150 - 1500

Material: Bronze, Al bronze (from -45°C...+115°C), carbon & stainless steel



Globe valves

Specifics:

Types: Straight, angle, Y-type, bellow sealed

Standards: EN, ANSI, GOST, API Sizes: DN 10 - DN 400, 1/4" - 16"

Pressure: PN 6 - PN320, Class 150 - 2500

Material: 1. Carbon and stainless steel, alloyed steel, bronze, ductile iron, duplex, superduplex



Dynaxe

Double eccentric design. Available in many high-quality materials. Available as wafer, lugged and double flanged type.

Specifics:

Size: DN50 - DN900 Pressure: 20 Bar (class 150) 50 Bar (class 300) Temperature: Up to +425°C



Econaxe

Double eccentric highperformance butterfly valve wafer body type.

Specifics:

Sizes: DN50-DN400 Body

Material: Metal

Body Type: Wafer/ Lug type



Butterfly valve

Specifics:

Sizes: DN40 - DN600

Types: -Double & triple eccentric, high performance HP butterfly valve, - Flanged, lug, wafer
Materials: Carbon and stainless steel, bronze, ductile iron, duplex, superduplex



CC Model

Square or rectangular sliding channel gate, with fixed parts embedded in concrete and seals on 3 sides. Available in a wide range of dimensions and for many different pressure heads.

Actuator: Handwheel, Pneumatic, Electric or Hydraulic, with a wide variety of actuator extensions available.



MU Model

Square or rectangular port sliding wall penstocks sealed on all 4 sides. Used for on-off or control applications in wells, tanks, pipe outlets, etc.

Carbon or stainless steel fabricated construction, with tight sealing by means of elastomer seals.

Available with actuator: Handwheel, Pneumatic, Electric or Hydraulic, with a wide variety of actuator extensions available.



DG Model

Round and square/ rectangular section flange mounted guillotine damper for gas isolation. Applications in cogeneration plants, waste heat recovery systems.

Specifics:

Sizes: Up to DN 2500



LIFE SCIENCE



Pharmaceuticals and biotechnology, food, and beverage as well as the cosmetics industry.

WATER TREATMENT PLANTS



Drinking water, industrial wastewater, high purity water, demineralised water, and desalination processes including thermal process, reverse osmosis and EDR process.

POWER GENERATION



Hydro power, flue gas, desulphurisation, cooling water, steam, waste incineration and renewable energy.

PULP & PAPER INDUSTRY



Paper, cardboard, and recycling

CHEMICAL PROCESSING



The chemical processing field covers production, distribution, surface treatment, and biofuels.

OIL & GAS



Petrochemical, gas distribution and production, coal seam gas, LNG, floating production, storage and operation, fire protection as well as cooling water.

MARINE



Valves and actuators can be found in various places on board any type of ship, wherever critical applications demand maximum reliability.

METERING



Meters are quickly and easily customised and adapted to various standards and specifications. Quality and safety are paramount in metering and hence never compromised.

DAMS & RESERVOIRS



AVK's product portfolio comprises a large and comprehensive range of gate valves, butterfly valves, check and recoil valves as well as a proven and most reliable range of submerged discharge and free discharge valves.

DISTRICT COOL - & HEATING



We supply a wide range of valves, gears and actuators for district cooling and heating systems. These products are distinguished by robust design, corrosive resistance, minimum condensation and long, maintenance free life. Our valves can be used in all applications both within and outside the buildings.

MINING & SLURRY



The product range covers valves and accessories for applications such as acid and solvent extraction of metals, slurries and cooling systems.

BULK HANDLING



Equipment for the handling of a wide range of dry solids of different granulometries which involve severe working conditions of pressure, temperature, and abrasiveness.



Worldwide product approvals



Note: All items for specific technical information on request.

Contact for inquiry:

Mark Veluz - Product Sales Specialist
 mrv@avk.ph
 09998226511

AVK Philippines, Inc.

#70 West Avenue, Brgy. West
Triangle 1104 Quezon City,
Philippines.

Tel.: +6323766399 / 6400-6402
www.avk.ph/en
sales@avk.ph

Expect... **AVR**